

XENO

## **Please read the User Manual carefully as it contains important information on the use and maintenance of the product.**

### **Important Notes**

- Please keep a mechanical key in a safe place outdoor, such as: car, office, etc.
- Do not attempt to dismantle the digital lock to avoid unnecessary losses.
- Do not use hard or heavy objects to knock on the digital lock.
- Make sure the door is closed and locked when leaving.
- Do not wipe the digital lock with water or other solvents (such as gasoline or other liquid containing benzene), as it may cause short circuit, aging or paint shedding of the digital lock.
- Change the password periodically.
- Please change the batteries when there is a voice prompt for low battery.
- Up to 32 digits of phantom & real password, including 6 digits of real password.  
Examples of combination: real password + \*\*\*\*, \*\*\*\* + real password, \*\*\*\* + real password + \*\*\*\*
- In case of touch panel failure, please connect to an emergency power supply via the USB port at the bottom of the digital lock and reboot the device.
- If using the mechanical key to unlock, please rotate the key back before taking it out.
- Please follow the above notes to avoid damage to the digital lock.
- Thank you for purchasing this product. Please read the user manual carefully before using the digital lock. Keep the manual for future reference.
- For a better after-sales service experience, please complete and keep the warranty card.
- Features and designs of the product may be improved for better user experience without informing the customer.
- The images in the user manual are for reference only, the product in kind prevails.

### **To prevent explosion and fire:**

- Do not store or use flammable items, such as gas, paint, gasoline, etc., near the digital lock;
- Do not put flammable and explosive items, such as alcohol, gasoline, etc., near the digital lock.
- The Company shall not be liable for any product damage, property damage or personal injury other than the product caused by improper installation, commissioning, maintenance or use by users or third parties with any third-party modules unauthorized by the Company.

Version note: 1.01

## Product Functions

### Intrusion/Damage Detection Alarm

- One-button Defense Mode: This function generates an alarm sound when someone uses the lock.
- Anti-dismantling Alarm: This function generates an alarm sound when an attempt to dismantle the exterior panel is made.
- Hijacking Notification: No alarm sound will be generated when the hijacking information is entered to unlock, but the hijacking notification will be sent to the terminal. (APP connection required.)

### Child Lock

- When the child lock is turned on, the one-button unlock behind the interior handle will be automatically turned off.

### PIR Motion Sensor

- When the PIR motion sensor is turned on, the door will be unlocked for face registered users; When the PIR motion sensor is turned on, the user needs to turn on the sensor to unlock with face recognition. (Note: the effective distance of PIR motion sensor is within 1m. The PIR motion sensor function is turned off by default. To turn on the function, please follow instructions on Page 14 of this User Manual (System Settings - PIR Motion Sensor)

### 3-Minutes System Unavailability

- The system will be unavailable for unlocking for 3 minutes after 5 consecutive verification errors.
- If there are 5 consecutive and incorrect inputs of any of the 3 types of verification information (fingerprint/ PIN code/card), this type of verification will be locked for 3 minutes.

### Forced Lock Mode

- To activate the Forced Lock mode, please short-press the "I" button, there will be a voice prompt-"Forced Lock mode has been activated". User may deactivate the forced lock mode with master password, master fingerprint, or the mechanical key. When deactivating the forced lock mode with master password/fingerprint, there will be a voice prompt-"Forced Lock mode has been canceled".
- To use and activate the Forced Lock under Security Mode (i.e.: dual authorization unlocking), please set the master password/fingerprint, and complete the verification to authorize deactivation of the forced lock in advance.

### IC Card Registration Function

- NFC-enabled IC cards can be registered on the digital lock. However, it may disable the registered cards to be used on other devices.

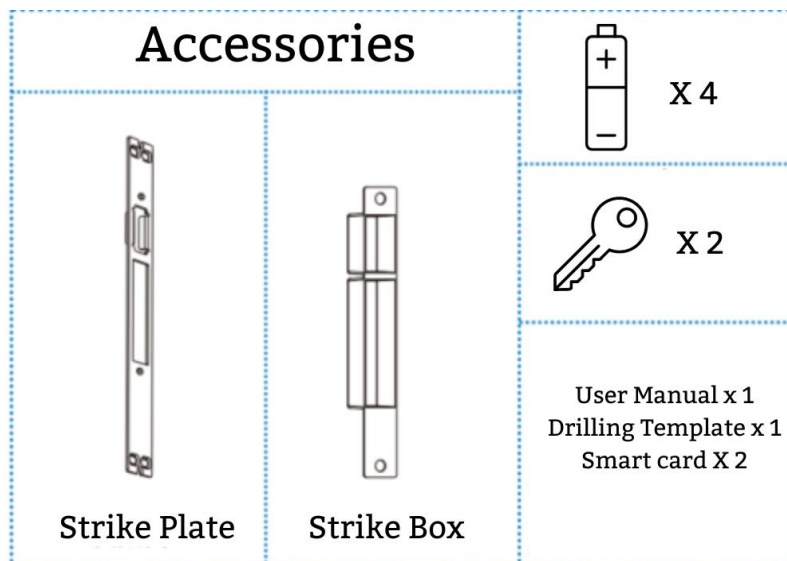
### Charging Indicator Light

- The indicator light will appear in red when the lock is charging, and will be off when the lock is fully charged.

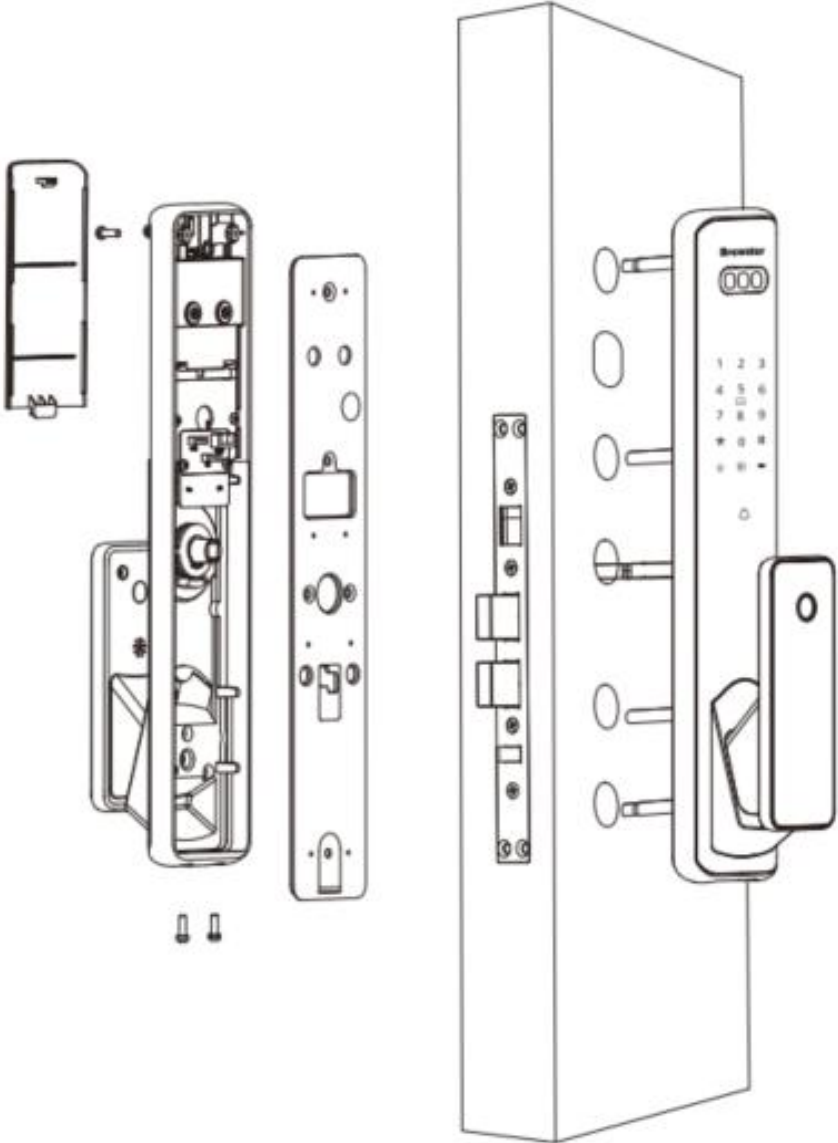
## Product Specification

Exterior part size:	69 (D) x 79 (W) x 395 (H)mm
Interior part size:	77 (D) x 79 (W) x 395 (H) mm
Operation Temperature:	-25°C~+55°C
Operation Humidity:	25~ 93%RH, no condensation
Face Registration Storage Capacity:	20 users
Password Storage Capacity:	100 sets
Fingerprints Storage Capacity:	100 prints
Card Registration Capacity:	100 cards
Battery Type:	1.5V AA Alkaline Battery × 4
Battery Life:	6 Months (10 interaction/Day)

## In the box

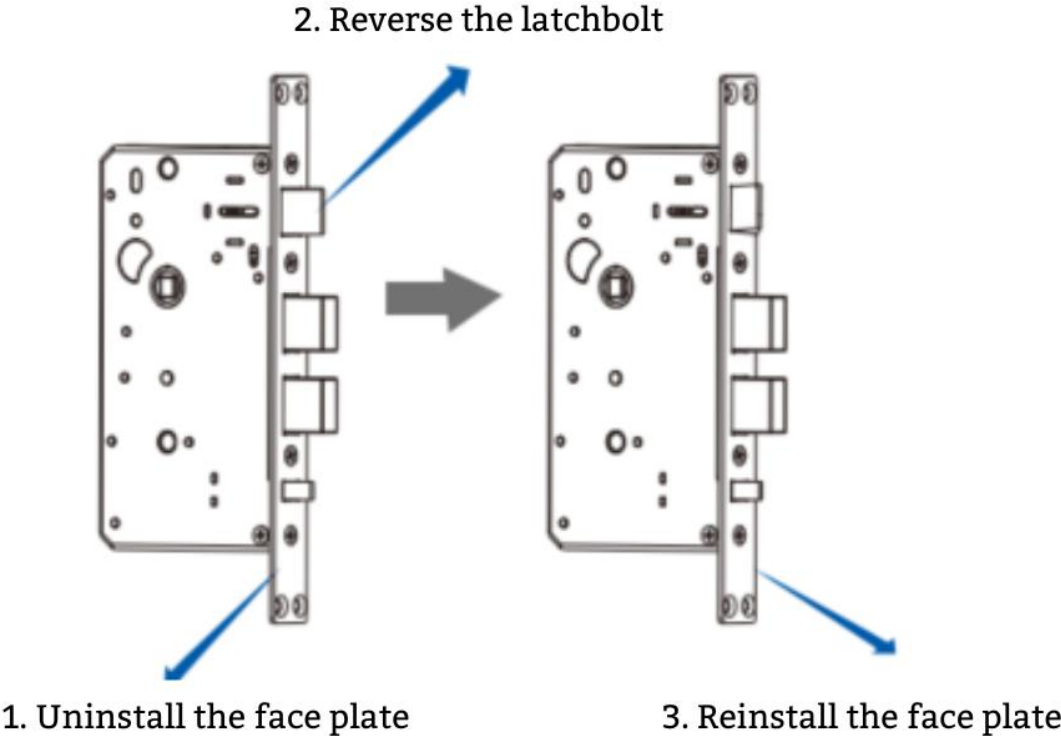


Installation Exploded View



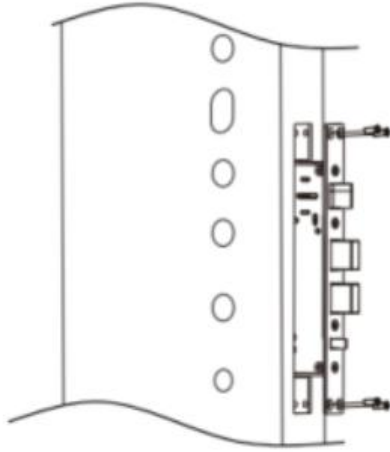
**Lock Installation Direction Check**

Note: The lock is applicable for both left and right door opening directions.  
Reverse the latch bolt according to the push-in/pull-out door opening directions.  
Please see the below image:

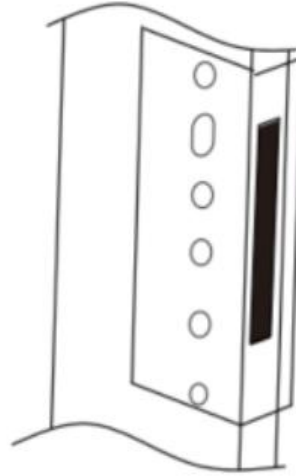


## Installation Guide

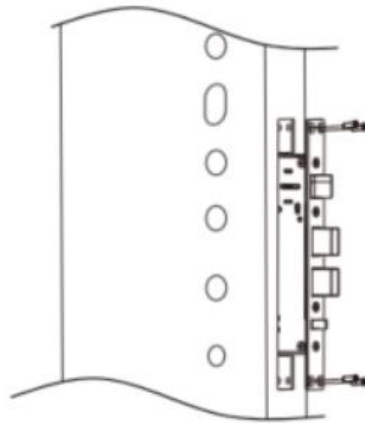
Mount the  
mortise into  
the door



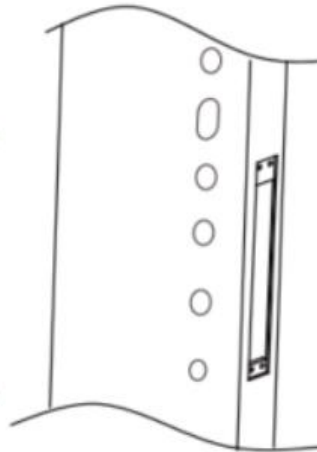
Place the drilling  
template on the  
door and mark the  
needed holes



Double confirm the hole  
opening and positions  
(Note: Take out the mortise  
before drilling)



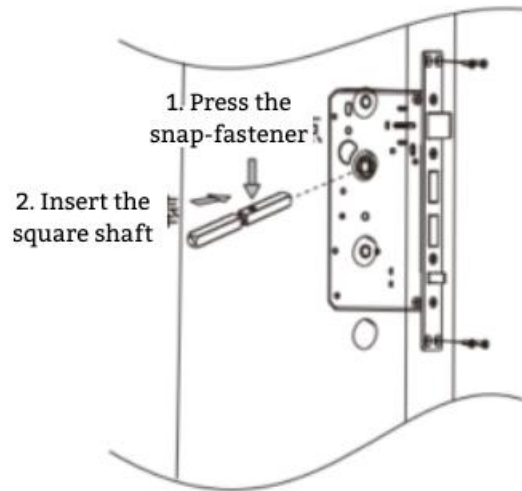
Drill the needed holes on  
the door



**Mortise Installation:**

Mount the mortise into the door, tighten the 4 anchor screws on the mortise

(Please make sure the main dead bolt is retracted during installation, and lead the mortise cable to the inside of the door)

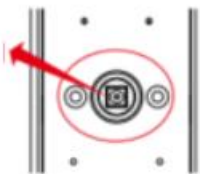


**Exterior Part Installation:**

Insert the square shaft into the rotary hole before installing the exterior part (Install the connecting screw tubes vertically on the exterior part, carefully plug/unplug the cable interface)

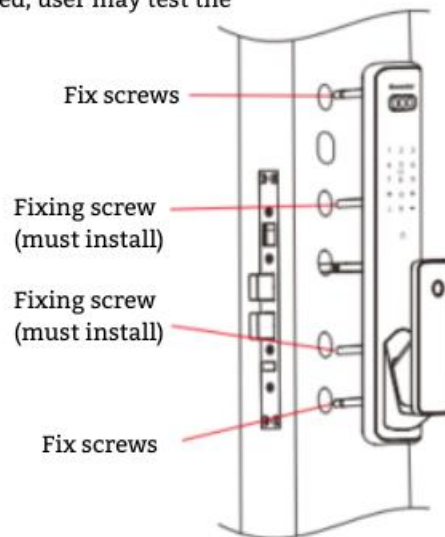
Note: Before the installation of exterior part, please do not test the mechanical key, and make sure the square shaft driving block is in straight up direction (as shown in the below image). After the installation is completed, user may test the mechanical key unlocking.

**square shaft in straight up direction**



**Attention: The length of square shaft and fixing screws.**

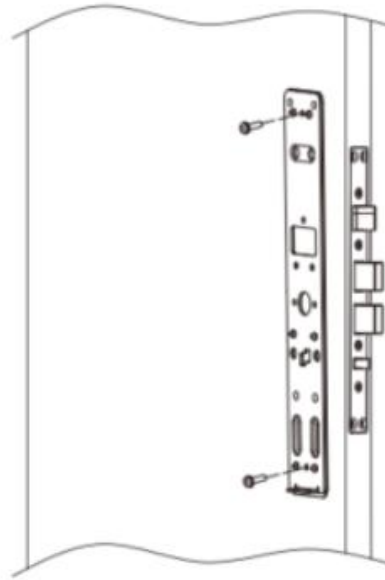
Square Shaft: 5mm longer than the door thickness.  
Fixing screw: Not longer than the door thickness.





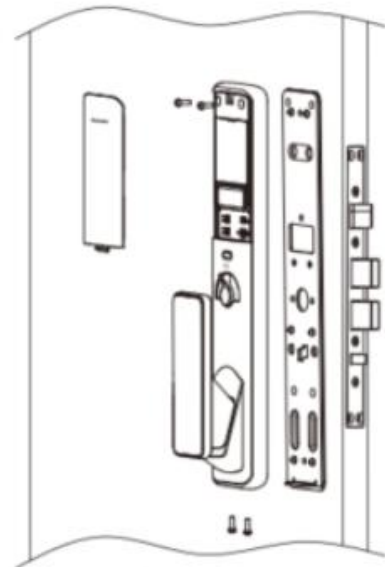
### Bracket Installation:

Install the seal plate together with the rubber spacer and tighten the 2 anchor screws.



### Interior Part Installation

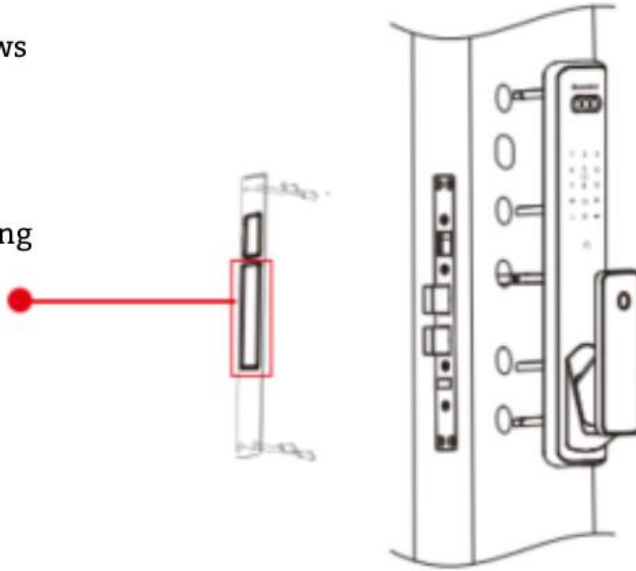
Tighten the 4 anchor screws



## Strike Plate Installation

Tighten the 4 anchor screws

Please make sure that opening for deadbolt on the door frame is completely hollow.



**Make sure all installed parts are fixed.**

**After Installation is Completed:**

Set password, register fingerprint and card. Test unlocking with the password, fingerprint, card and mechanical key.

Test opening and closing the door at least 3 times.

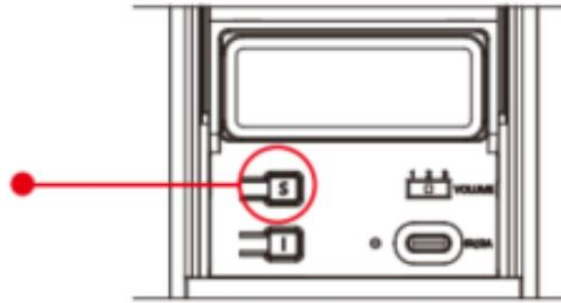
**Before Using the Digital Lock:**

Please activate new master registration immediately. You are advised to change the password periodically.

Please read the instructions carefully before use and understand the key functions, such as the emergency power function and forced lock mode, etc.

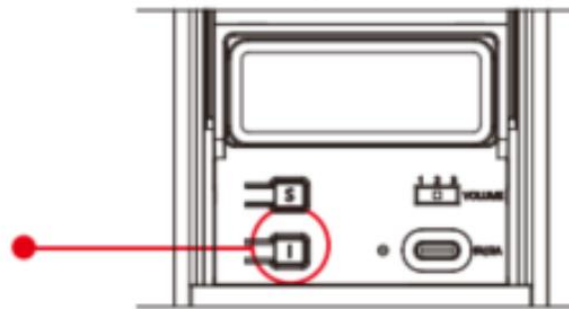
### "S" Button

Short-press to enter the system menu

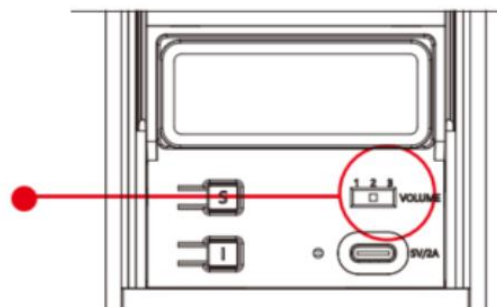


### "I" Button

Short-press to forced locking; long-press to restore factory defaults

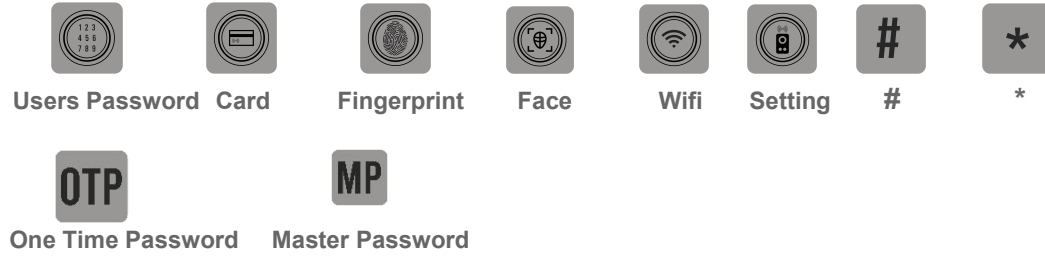


### Volume Button 3 Options Mode



## User Menu guide

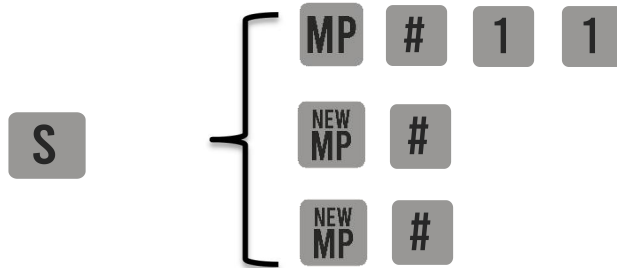
### ◆ Icon annotation



\*Recommended to set only after adding all user

## Set Master Password (MP)

Default master password: 1234567890



S MP \* 1



Users Password

### Register Normal User Password

2

0 0 2 - 0 9 0

Optional  
(User ID)

# # #

### Register One-time User Password

3

0 9 1 - 1 0 0

Optional  
(User ID)

# OTP # OTP #

### Deleting User password

4

0 0 2 - 1 0 0

Optional  
(User ID)

#

### Deleting All User Password

5 #

S MP \* 2



### Register Normal User Card

1

1 0 1 - 1 9 0

Optional  
(User ID)

#  #  #

### Register One-time User Card

2

1 9 1 - 2 0 0

Optional  
(User ID)

#  #  #

### Deleting User Card

3

1 0 1 - 2 0 0

Optional  
(User ID)

#

### Deleting All User Card

4 #





S MP \* 3







### Register Master Fingerprint

1  
   

### Register Normal Fingerprint

2  
2 0 2 - 2 9 0 Optional  
(User ID)  
#     #

### Registering Notification Fingerprint

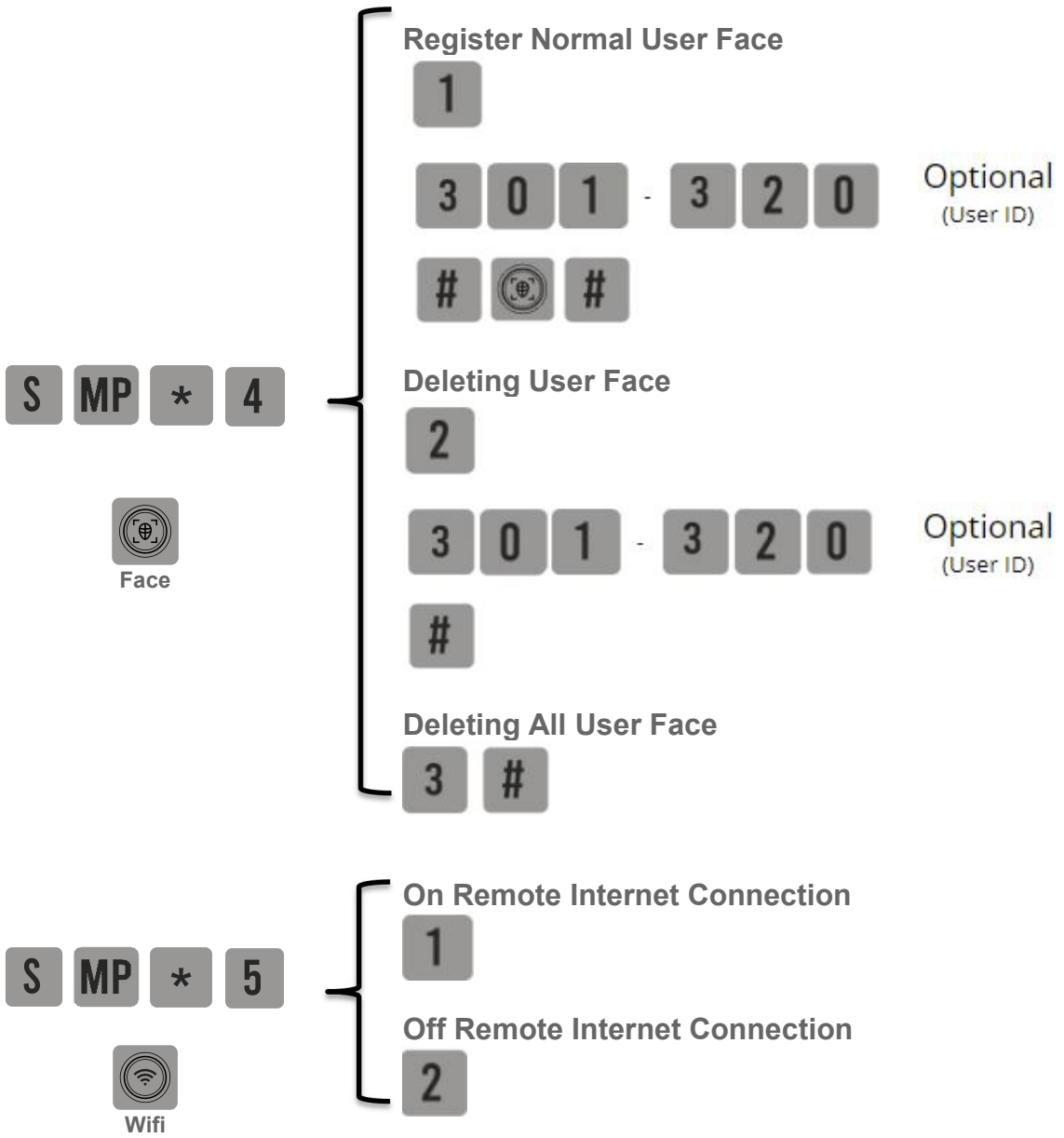
3  
2 9 1 - 3 0 0 Optional  
(User ID)  
#     #

### Deleting User Fingerprint

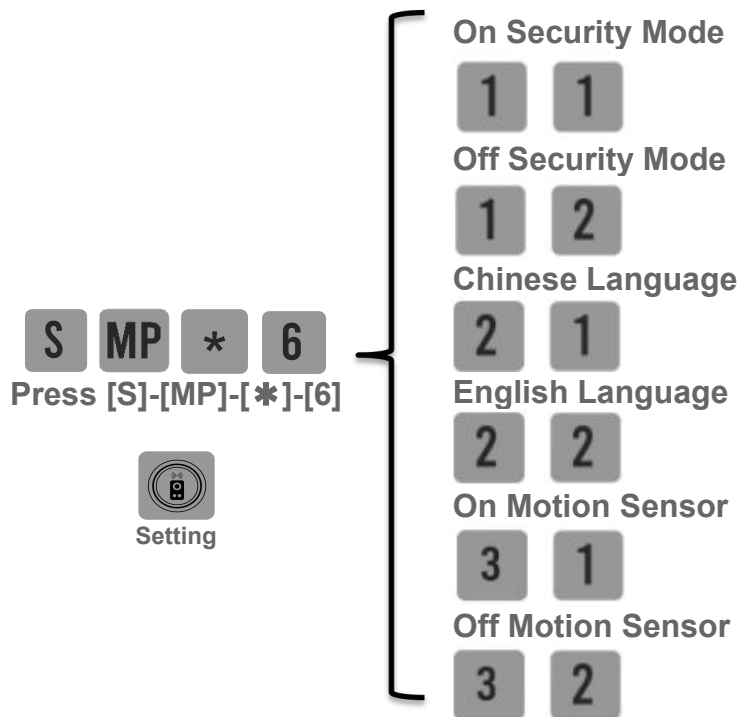
4  
2 0 2 - 3 0 0 Optional  
(User ID)  
#

### Deleting All User Fingerprint

5 #







### Warranty guide

We would like to extend our heartfelt gratitude for choosing Xeno. Your trust in our brand means the world to us, and we are committed to providing you with a high-quality and reliable product.

To ensure you get the most out of your purchase, please scan the QR code to register your warranty:



<https://xeno.com.sg/warranty-registration>